

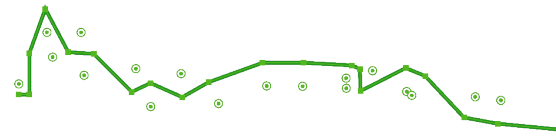
Topophones Sound Emitter Design

The starting point for the shape of a sound emitter is the audio waveform of a word addressing a concern related to a location, e.g. the names of highly toxic pesticides that lead to the extinction of honey bees:

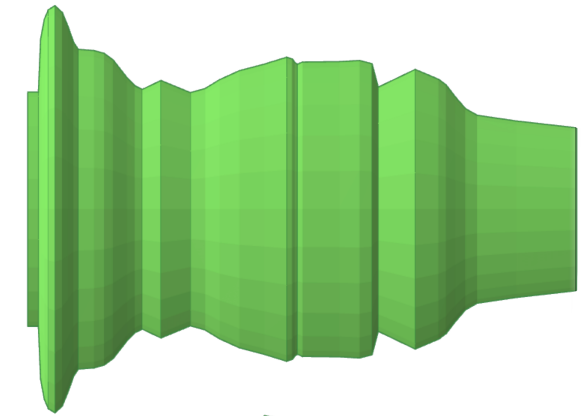


Ammo (cypermethrin)

Extracted outline of audio waveform, simplified:

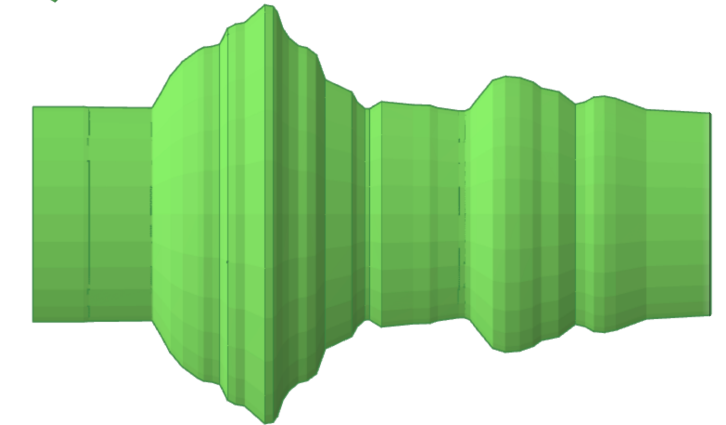


Waveform translated vertically and rotated around its axis:

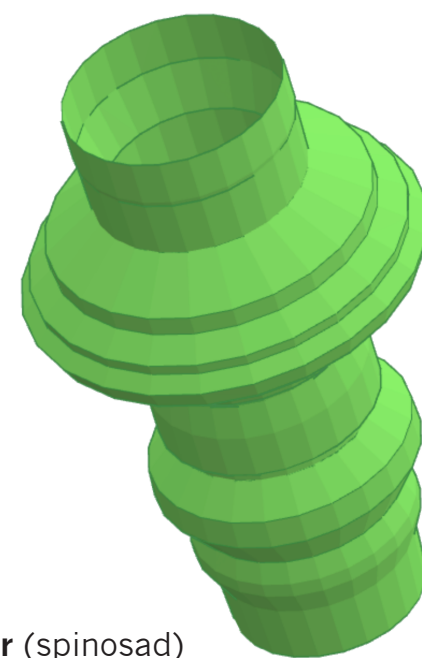


Tracer (spinosad)

Pesticide information source: <https://extension.entm.purdue.edu/publications/E-53/E-53.html>



Final sound emitter designs:



Tracer (spinosad)



Ammo (cypermethrin)