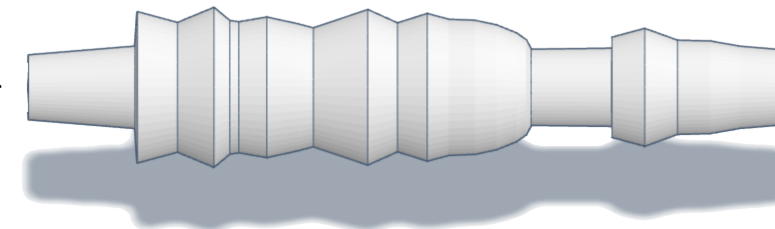
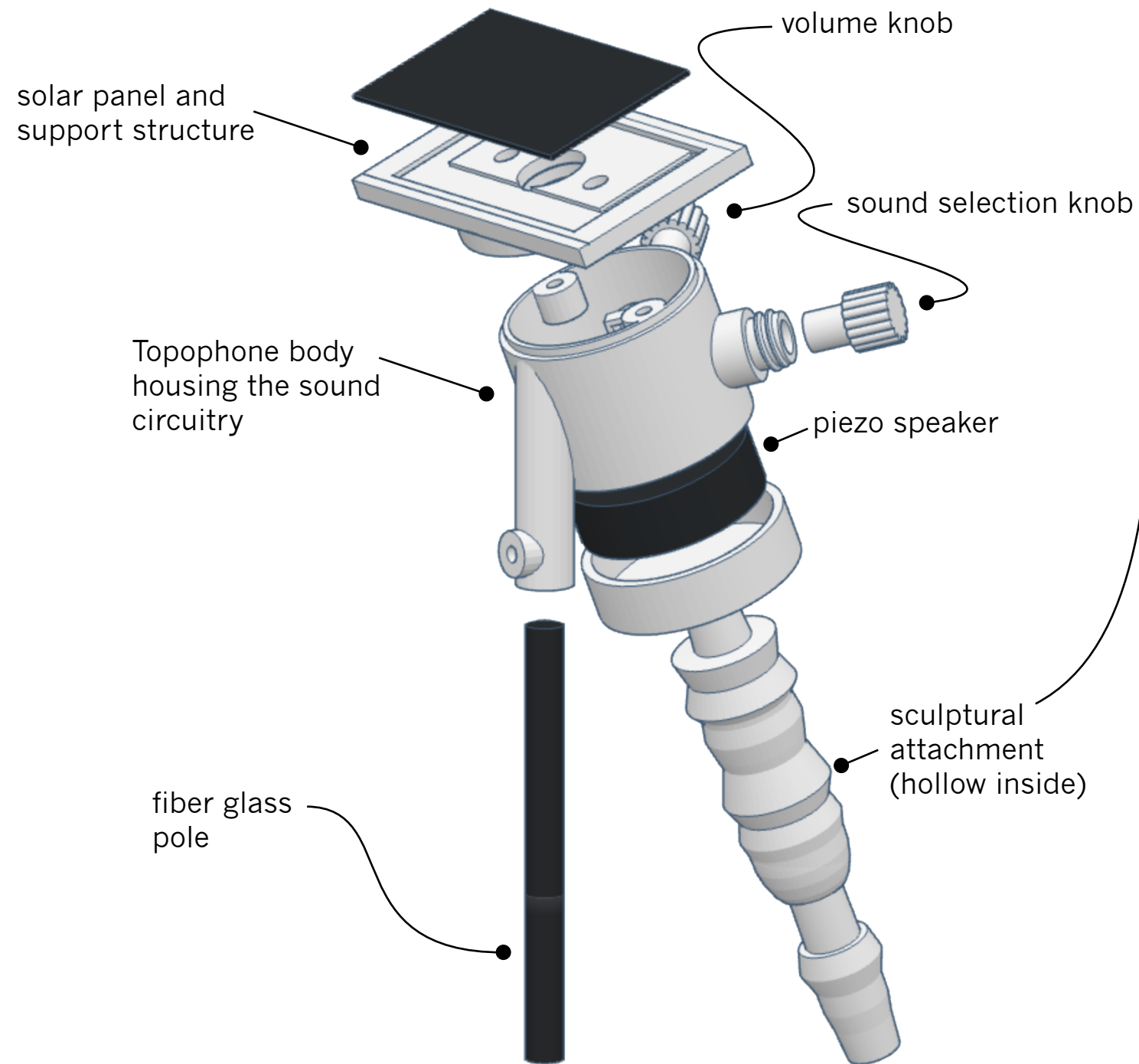


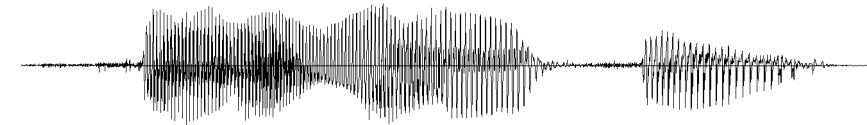
# Anatomy of a Topophone



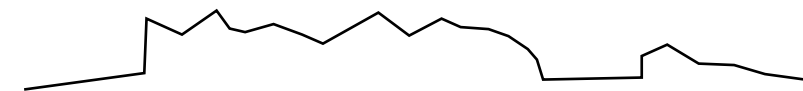
Each Topophone has an abdomen-like, sculptural attachment connected to its piezo speaker referencing the names of insecticides. Each of the 3D forms is based on the audio waveform of their spoken names, for example: Silencer, Warhawk, Hero, or DDT.

The steps below illustrate the process of creating the attachments:

I. Audio waveform of the spoken word: "Silencer"



II. Reduction of the waveform amplitude to an outline



III. Revolution of the waveform outline around its own axis

